

## HEALTH AND SAFETY ALERT N°23

### AN UNCONTROLLED LIFTING OPERATION

#### *The Incident*



During a lifting operation on a MVB site 4A the slinger signaller had attached the chains of the crane to a compressor which was to be lifted to a position where it could be towed to another location, site security requested the slinger signaller to complete the paperwork to remove the compressor from site.

It was at this time that the crane driver under no further instruction from the slinger signaller continued with the lift.



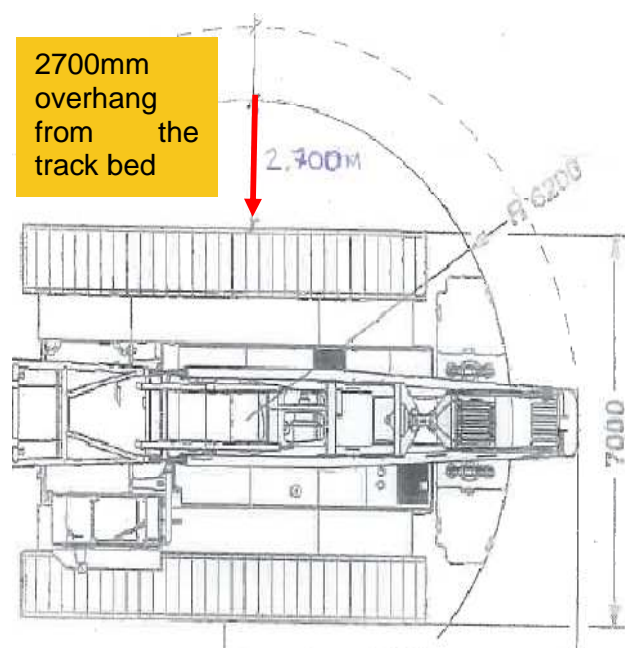
Whilst continuing with the uncontrolled lift, the crane driver has slewed to place the compressor in a location to be towed, in doing so he has hit the cooling fins of the transformer with the counterweight of his crane.

The cranes counterweight has a 2.70 m overhang from the track bed of this crane, which has not been taken into consideration whilst slewing.



#### **The Investigation:**

- The investigation has identified the change in controls
- The crane driver should not of continued with the lift without any instructions from his slinger/ signaller
- The security guard should not of interrupted the slinger signaller during a safety critical activity
- The slinger signaller should not of started his task without the paperwork being completed, therefore removing the need for the security guard interrupt the sequence of events



#### **The Findings:**

- No Lift to carried out without the direct instruction from the slinger/signaller
- The slinger/signaller is responsible for initiating and directing the safe movement of the crane.
- On all sites, lifting operations should be carried out to a specific lift plan, on the small more compact sites it is especially important for the slinger/signaller and crane operator to be aware of the crane footprint and slewing radius .
- MVB doesn't tolerate operatives working without a lift plan or deviating from a lift plan