



PRODUCT ADVISORY	5337
-------------------------	-------------

MODEL(S): PS5000-PS6000 & TA5s-TA6s swivel skip dumpers
AFFECTED built between June 2004 and June 2010

SUBJECT: Skip cylinder pin inspection

DATE: 18th May 2012

ISSUE:

Terex has been informed of isolated cases where damage has occurred to the skip cylinder pins and/or the skip cylinder bushes on 5-6T swivel skip Site Dumpers. Terex are recommending the subsequent inspection of the pins and cylinder bushes in the skip cylinder to determine if any damage to the pin or displacement of either of the bushes has occurred.

ACTION:

During the machines next routine inspection/service, inspect the top skip hydraulic cylinder pin. This must be checked for abnormal wear (see pictures 2 & 3). This will involve the removal the top skip cylinder pin (part number 1585-1439 - Picture 1) to check its condition. Whilst the pin is removed also check that the two bushes (part number 1583-1103) on each side of the rod end of the skip cylinder are in the correct position (picture 4).

It is important that the cylinder & skip bores are aligned before replacing the pin. There is a risk of displacing the bushes if excessive force is used to insert the pin. If there is any abnormal wear to the pin or the bushes have been displaced, then a new pin should be fitted and the bushes re-located.

After refitting the pin a check can be carried out to make sure there has not been any displacement of the bush. This can be done by removing the grease nipple and measuring the distance down the drilled grease orifice as per the attached diagram

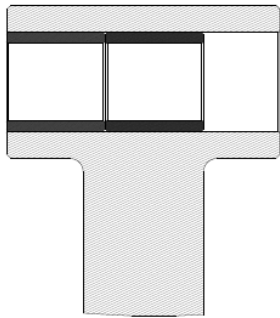


(picture number 5). The measurement recorded, if there has not been any displacement of the bush, should be 17.5mm. If the bush has been displaced then expect to find a reading of 12.5mm. If a lower reading is found then please remove the pin and check the bushes inside the cylinder rod end for displacement/free play.

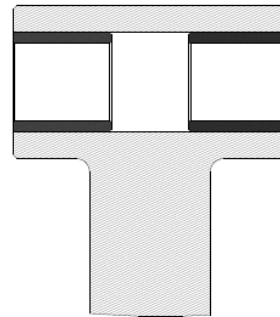


Picture 1

Pin to be inspected



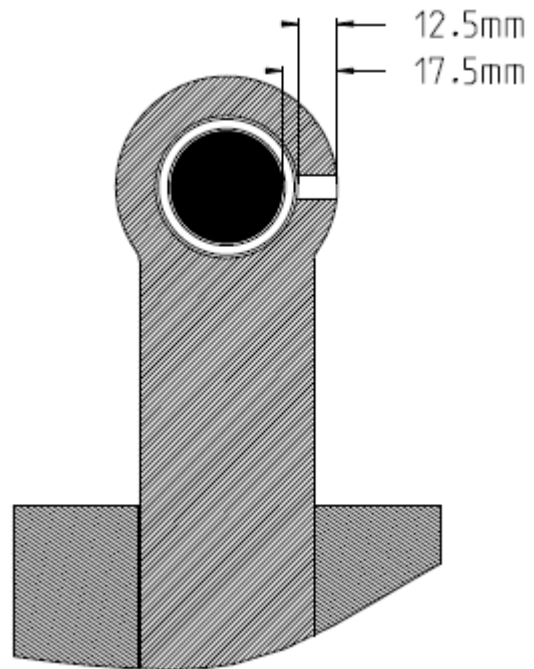
Picture 2 – Incorrect wear pattern



Picture 3 – Correct wear pattern



Picture 4



Picture 5



In case of any questions please contact us: cov.servicedesk@terex.com
Call our help line on: +44 (0)2476 339400

This is not a campaign, repair or replacement of parts is not authorized without the explicit approval of Terex.

Thank you in advance for your support and prompt completion of this inspection.