

Safety Alert

HIGH HAZARD SITUATIONS CONTACT WITH HIGH VOLTAGE ELECTRICITY CABLE

What Occurred?

Contact was made with a 5KV electric pilot cable and two 11KV electric cables. This resulted in serious damage to the cables and the excavator bucket.

The Task

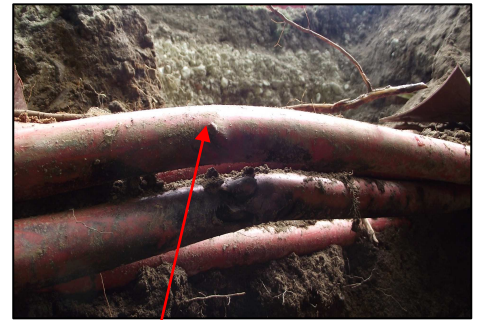
The team were carrying out excavation activities in a grass verge to install a new water supply. The area where the connection was to be made was in close proximity to the three cables. The team were in possession of all the relevant documentation onsite including the electricity utility records.

The area was scanned using a CAT & Genny in conjunction with the utility records, and the area was clearly marked out.

The Incident

Without prejudice, from the information gathered during the investigation it would appear that the mini-excavator was used directly in the area where the cables were running. This resulted in the 9" bucket coming into contact with the cables which caused the damage.

No injuries were sustained as a result of this incident.



Area of plant contact

Learning Points for MUS

NEVER dig directly on the line of identified underground plant. Mechanical plant, sharp digging tools or hand held power tools **MUST** not be used **WITHIN** 0.5m of any identified or suspected buried apparatus.

ALWAYS hand-dig trial holes to expose and confirm the location and depth of power cables. When carrying out trench work, trial holes will be excavated by hand at regular intervals over the whole length of the works to identify any underground apparatus so that a safe route can be taken.

If site conditions, or the work activity changes, **STOP**, review the job pack including utility drawings and review and communicate the Site Specific Risk Assessment accordingly prior to resuming.

If you are in any doubt whatsoever, when working in close proximity to any potentially hazardous situation, **STOP** work and contact your Supervisor / First-Line Manager before resuming work.

If in Doubt – Stop – Seek Advice

Remember

Nothing we do is so important that we cannot take the time to do it safely