



Tool Box Talk

Focus on Performance

Resource Conservation

Sust. 08

What?

Interserve aims to minimise the resources used directly and indirectly as a result of our construction activities. These include energy (electricity, oil, diesel, gas) and water.

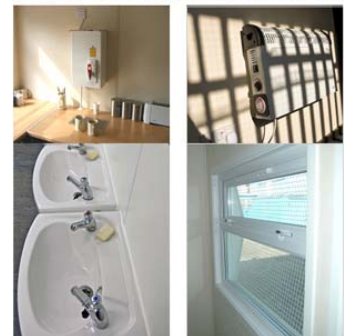
Why?

The use of unnecessary energy wastes money and has a severe impact on the environment through waste of resources and pollutants produced in generation of power.

Wasting water contributes to water shortages and lack of availability for other users. It also wastes the resources invested in drinking water through its treatment.

How?

- Report any defects in plant and equipment at once.
- Do not block heaters or ventilators.
- Turn off or turn down heating to regulate temperatures. Do not use doors and windows as this wastes valuable energy.
- If heating is used during cold spells, make sure doors and windows are kept shut.
- Switch off site/office lighting when not in use. Make sure however that the lighting is not used for safety or security. If in doubt ask!
- Do not allow taps to run wasting water. Report any leaking pipes or taps so that they may be entered into a defects log and addressed.
- Ensure at the end of a shift that all electrical equipment is switched off or if set on timers that they are set correctly.



Questions

1. How might we waste energy on site?
2. What might you do to make sure heat doesn't escape from the canteen in winter?
3. What should you do if you discover a leaking water pipe?

If you have any queries regarding the content of this tool box talk please contact your Sustainability Advisor or Line Manager.