

01 **Toe Board Protection on Construction Site Staircases**

This guidance sheet has been produced and issued to clarify the Business Units requirements in accordance with current Legislation regarding toe board protection on construction site scaffold / Haki staircases to prevent injury or incident from objects falling from height.

What does the Law say?

The Work at Height Regulations 2005 defines a working platform as *"(a) any platform used as a place of work or as a means of access to or egress from a place of work; (b) includes any scaffold, suspended scaffold, cradle, mobile platform, trestle, gangway, gantry and **stairway** which is so used"*.

Falling Objects - Regulation 10

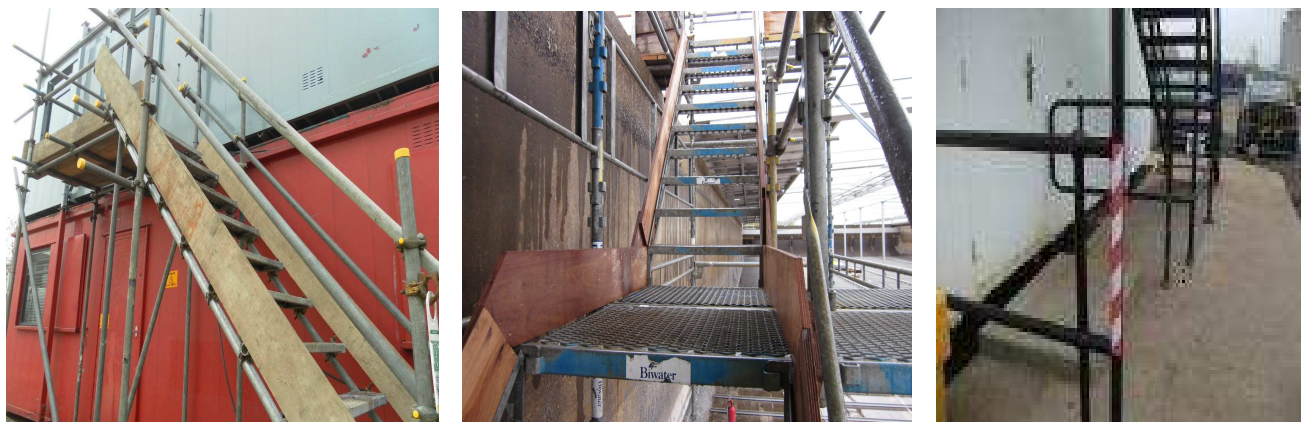
- (1) Every employer shall, where necessary to prevent injury to any person, take suitable and sufficient steps to prevent, so far as is reasonably practicable, the fall of any material or object.*
- (2) Where it is not reasonably practicable to comply with the requirements of paragraph (1), every employer shall take suitable and sufficient steps to prevent any person being struck by any falling material or object which is liable to cause personal injury."*

*** Schedule 3 - Safety on working platforms - Regulation 8(b)**

5. A working platform shall— (b) possess a suitable surface and, in particular, be so constructed that the surface of the working platform has no gap —
(i) through which a person could fall;
(ii) through which any material or object could fall and injure a person; or
(iii) giving rise to other risk of injury to any person, unless measures have been taken to protect persons against such risk"

*Consideration must be given to preventing access under stairs with barriers as shown below, or the addition of debris netting (or similar) underneath as an added precaution.

Given the above it is deemed an immediate mandatory requirement for toe-boards to be fitted to these types of stairs with debris netting (or similar) or access underneath blocked as appropriate.



All access staircases are subject to risk assessment and temporary works department approval as required.

For further guidance please contact the HS&E Department.