

## High Winds – Securing Site Cabins Action Required



### Scope

This communication applies to all employees and others working in the vicinity of Site Cabins/ Containers during extreme weather.

### Incident

There was a recent incident on a construction site with a Jacobs presence where a Contractor's Site Cabin blew over trapping an individual below it. The Contractor was really fortunate to escape with only minor injuries.

A top storey, double stacked cabin which was being used as a meeting room, was blown off in extremely high winds falling approximately eight feet to the ground. It was unoccupied at the time of the incident.

We understand that the Contractor was securing a 'bean bag safety cushion' in a storage area adjacent to the cabins and on hearing a noise he began to run and tripped over, landing on his stomach as the cabin fell to the ground on top of him. Part of the cabin landed on the 'bean bag safety cushion' providing a small void and preventing him from being crushed.

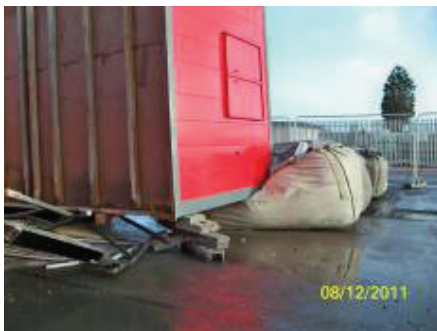
### Investigation

The investigation is on-going, however, it is understood that the cabins were not secured and anchored to the ground. Further details will be issued when they are available.

The circumstances of this incident would have been far more serious had the Contractor not fallen over or if the cabin had not landed on the 'bean bag safety cushion'.

### Action required

On sites where Jacobs staff have a presence we should, in conjunction with the Contractor, review the processes that have been put in place to ensure that all Site Cabins/ Containers have been adequately constructed and are adequately anchored or secured together to withstand extreme weather conditions.



**Photo shows:** Site cabin blown off from lower cabin and resting on 'bean bag safety cushion' at the south-east corner. The site cabin was lifted up by the Contractor's site plant and temporarily propped at the south-west corner. (See over page)

# JACOBS



## High Winds – Securing Site Cabins Action Required



**Photo shows:** View at south-east corner: Site cabin landed on “bean bag safety cushion” and provided approximately 400mm void between the base of the site cabin and the ground level. We understand that the injured party was under the site cabin at this location.



**Photo shows:** View of remaining cabins immediately after incident – cabins are not physically connected or secured to the ground.

Paul Hendry  
Senior HSE Manager  
Jacobs Infrastructure

**JACOBS**

